

Antimicrobial Resistance, Virulence Genes, and Genetic Diversity of *Salmonella enterica* Isolated from Sausages

Abdelaziz Ed-Dra^{1*}, Fouzia Rhazi Filali¹, Slimane Khayi², Said Oulghazi³, Brahim Bouchrif⁴,
Abdellah El Allaoui¹, Bouchra Ouhmidou⁵ and Mohieddine Mounni³

¹Team of Microbiology and Health, Laboratory of Chemistry-Biology Applied to the Environment, Moulay Ismail University Faculty of Sciences, BP. 11201 Zitoune Meknes, Morocco

²Biotechnology Research Unit, National Institute for Agronomic Research (INRA), BP. 415, Avenue de la Victoire, Rabat, Morocco

³Cellular Genomics and Molecular Techniques of Investigations, Moulay Ismail University Faculty of Sciences, BP. 11201 Zitoune Meknes, Morocco

⁴Laboratory of Microbiology and Hygiene of Food and Water, Pasteur Institute Morocco, 1 place Louis Pasteur, Casablanca 20100, Morocco

⁵Laboratory of Bioactive Molecules, Structures and Functions, Faculty of Sciences and Technologies, Sidi Mohamed Ben Abdallah University, Fes, Morocco

Received: 28 December 2018; accepted: 30 January 2019

Salmonella is a major cause of morbidity and mortality in humans worldwide, and the infection with multidrug-resistant strains can cause severe diseases. This study was designed to evaluate the antimicrobial resistance, to detect the virulence genes, and to study the genetic diversity of isolated *Salmonella* strains using 16S rRNA sequences. For this, 34 *Salmonella* strains isolated from sausages were identified using biochemical and serological methods. Molecular tools were used to evaluate the presence of virulence genes (*orgA*, *sitC*, *sipB*, *spiA*, *iroN*, and *sifA*) using simplex and multiplex polymerase chain reaction (PCR) and to sequence 16S rRNA genes for phylogenetic analysis. The susceptibility to 24 selected antibiotics was also studied. The results of this study showed that all isolated *Salmonella* were positive for targeted virulence genes and were resistant to at least one antibiotic. However, the multidrug resistance was observed in 44% of isolated strains. The phylogenetic analysis of 16S rRNA sequences highlighted that *Salmonella* isolates were divided into 3 clusters and 3 sub-clusters, with a $\geq 98\%$ similarity to *Salmonella enterica* species. From this study, we conclude that sausages are considered as a potential source of *Salmonella*, which could be a major risk to public health.

Keywords: *Salmonella*, 16S rRNA gene, phylogenetic tree, virulence genes, sausages

Introduction

Salmonella species were discovered more than a century ago by Salmon, an American scientist. They are Gram-negative, motile, facultative anaerobic bacteria and classified within the Enterobacteriaceae family [1]. *Salmonella* are regarded as a major food-borne pathogen that causes an economic burden for health care systems worldwide [2]. The consumption of animal products contaminated with *Salmonella* is the leading cause of human Salmonellosis [3]. Globally, 94 million cases of gastroenteritis were caused by *Salmonella* with 155,000 deaths each year, knowing that 85% of them were related to food [4]. In the United States, a study estimated that nontyphoidal *Salmonella* were responsible for 1,027,000 cases of food-borne illness each year, with 19,586 hospitalizations and 378 deaths [5]. In Morocco, *Salmonella* are responsible for 42.8% of food-borne diseases [6].

The pathogenicity of *Salmonella* is influenced by a variety of virulence factors that play an important role in a wide range of pathogenic mechanisms, such as adhesion, invasion, intracellular survival, toxin production, and iron acquisition [7]. However, the presence of virulence genes in multidrug-resistant strains of *Salmonella* is associated with a severe infection and is a major public health concern [8].

The identification of *Salmonella* is subjected to various constraints due to the greater diversity of its species and serovars. The *Salmonella* genus contains two species, *Salmonella bongori* and *Salmonella enterica*, which is divided into six sub-species with the presence of more than 2600 serotypes [9]. Nowadays, it is agreed that the identification of *Salmonella* by biochemical and serological techniques requires about a week [10]. Hence, molecular methods based on DNA sequences represent the best alternatives for accurate and rapid bacterial identifications.

In the last years, the use of DNA sequencing has increased in the determination of the evolutionary relationships of different bacteria [11, 12]. In relation to *Salmonella*, phylogenetic studies includes sequencing of 16S rRNA, 23S rRNA, house-keeping genes, virulence genes, and *inv-spa* invasion gene complex [12]. It has been shown that genetic analysis of 16S rRNA gene increases the resolution between genus and species of *Salmonella enterica* and has a major role in bacterial phylogeny and taxonomic studies [13].

In Africa, specifically in Morocco, we noticed a lack of information for *Salmonella* pathogenicity and molecular identification. Thus, in this context, the objectives of this study were (i) to analyze the 16S rRNA sequences of 34 *Salmonella* strains isolated from sausages and determine their phylogenetic relationship, (ii) to study the distribution of 6 virulence

*Author for correspondence: E-mail: abdelaziz_iaa@yahoo.fr; Tel: +212613202939.

This is an open-access article distributed under the terms of the Creative Commons Attribution-NonCommercial 4.0 International License (<https://creativecommons.org/licenses/by-nc/4.0/>), which permits unrestricted use, distribution, and reproduction in any medium for non-commercial purposes, provided the original author and source are credited, a link to the CC License is provided, and changes - if any - are indicated.

genes among the isolated strains, and (iii) to assess their antimicrobial resistance using 26 antibiotics.

Materials and Methods

Isolation, Identification and Antimicrobial Susceptibility Testing. Thirty four *Salmonella enterica* belonging to 12 serotypes were isolated from sausages (beef sausages, turkey sausages, and artisanal sausages “merguez”) sold in Meknes city in Morocco and confirmed by biochemical, serological, and molecular tests [10]. The disc diffusion method on Mueller–Hinton agar was used to study the antimicrobial susceptibility profiles of isolated *Salmonella* against 26 antibiotics (Table 1). Results were interpreted according to the recommendation of the Clinical and Laboratory Standards Institute [14]. *E. coli* ATCC 25922 was used as a positive control of this study, and the isolated *Salmonella* strains showing a decrease in susceptibility (intermediate) were considered as resistant.

Table 1. The antimicrobial agents used in this study

Antimicrobial agents	Code	Disk Content
Ampicillin	AMP	10 µg
Amoxicillin	AML	25 µg
Amoxicillin–clavulanic acid	AMC	20 µg/10 µg
Imipenem	IPM	10 µg
Ceftriaxone	CRO	30 µg
Cefuroxime sodium	CXM	30 µg
Ceftazidime	CAZ	30 µg
Cefamandole	MA	30 µg
Cefotaxime	CTX	30 µg
Cefoxitin	FOX	30 µg
Aztreonam	ATM	30 µg
Sulfamethoxazole	SMX	200 µg
Amikacin	AK	30 µg
Colistin sulfate	CT	50 µg
Kanamycin	K	30 µg
Ofloxacin	OFX	5 µg
Enrofloxacin	ENR	5 µg
Ciprofloxacin	CIP	5 µg
Nalidixic acid	NA	30 µg
Flumequine	UB	30 µg
Sulfonamide	SSS	200 µg
Gentamicin	CN	30 µg
Chloramphenicol	C	30 µg
Tetracycline	TE	30 µg
Streptomycin	S	10 µg
Trimethoprim–sulfamethoxazole	SXT	1.25 µg/23.75 µg

Table 2. Description of genes functions used in this study

Genes	Virulence-related function	References
<i>orgA</i>	Host recognition/invasion	[35]
<i>sipB</i>	Entry into nonphagocytic cells, killing of macrophages	[36]
<i>sitC</i>	Iron acquisition	[37]
<i>spiA</i>	Survival within macrophage	[30]
<i>iroN</i>	Iron acquisition	[27]
<i>sifA</i>	Filamentous structure formation	[29]

Table 3. Primers sequences used to amplify the virulence genes of isolated *Salmonella*

Virulence genes	Primer sequence (5'-3') ^a	Size (bp)	GenBank no.	References
<i>orgA</i>	F: TTTTGGCAATGCATCAGGGA R: GGCGAAAGCGGGACGGTATT	255	NC003197	[7]
<i>sitC</i>	F: CAGTATATGCTCAACGCGATGTGGGTCTCC R: CGGGGCGAAAATAAAGGCTGTGATGAAC	768	NC003197	[7]
<i>sipB</i>	F: GGACGCCGCCGGGAAAAACTCTC R: AACTCCCGTCGCCGCTTCACAA	875	NC003197	[7]
<i>spiA</i>	F: CCAGGGGTCGTTAGTGATTTGCGTGAGATG R: CGCGTAACAAAGAACCCGTAGTGATGGATT	550	NC003197	[7]
<i>iroN</i>	F: ACTGGCACGGCTCGCTGTCGCTCTAT R: CGCTTTACCGCCGTTCTGCCACTGC	1205	NC003197	[7]
<i>sifA</i>	F: TTGCCGAACGCGCCCCACACG R: GTTGCCCTTTCTTGCGCTTTCCACCCATCT	449	NC003197	[7]

^aF = forward; R = reverse.

Amplification of the Virulence Genes Using Multiplex Polymerase Chain Reaction (PCR). Simplex and multiplex PCR methods were used to examine the presence of 6 virulence genes in the isolated *Salmonella* (Table 2), using their gene specific primers as described in Table 3. The simplex PCR method was used to amplify the genes *spiA*, *iroN*, and *sifA* as described previously by Mezal et al. [15]. Meanwhile, the multiplex PCR method was used to amplify the genes *orgA*, *sipB*, and *sitC* as described by Skyberg et al. [7]. The amplification was done in a Mastercycler gradient (Perkin-Elmer, Boston, MA) under the following conditions: 5 min at 95 °C, 30 cycles of 30 s at 94 °C, 30 s at 66.5 °C, and 2 min at 72 °C, with a final cycle of 10 min at 72 °C. The isolated strains were considered positive for the tested virulence genes if they produce an amplicon with the expected size (Table 3). *Salmonella enterica* serovar typhimurium DT104 was used as positive control.

Amplification and Sequencing of the 16S rRNA Genes. DNA was extracted from a culture on liquid medium using DNA Isolation Kit (Gen Elute Bacterial Genomic DNA kit, Sigma) according to the manufacturer's instructions. The amplification of 16S rRNA gene was performed in a reaction mixture of 25 µL, with 12.5 µL of ddH₂O, 2.5 µL of 10x PCR buffer, 3.0 µL of 50 mM MgCl₂, 0.5 µL of 10 mM dNTPs (KAPA Biosystems, USA), 2 µL of template DNA (70 ng/µL), 0.2 µL of Taq DNA polymerase enzyme (5 U/µL; KAPA Biosystems, USA), and 1.25 µL of 10 µM from each primer: fD₁ (AGAGTTTGATCCTGGCTCAG) and rP₂ (ACGGCTACCTTGTTCAGACTT) [16]. The amplification was performed in “Veriti” thermal cycler (Applied Biosystems, USA) under the following conditions: 10 min at 94 °C, 36 cycles of 1 min at 94 °C, 30 s at 52 °C, 2 min at 72 °C, and a final cycle of 10 min at 72 °C. Electrophoresis migration was done in 1% agarose (Sigma) for 1 h at 100 V. Then, gel was stained in ethidium bromide with a concentration of 0.5 µg/mL for 20 min, rinsed, and visualized using «G Box» system (Applied Biosystems, USA).

The obtained PCR products were purified by QIAquick PCR purification kit (ExoSAP-IT Affymetrix, USA), and sequenced bi-directionally using Big Dye Terminator Kit version 3.1 (Applied Biosystems) to prepare sequencing reactions. The sequencing procedure was conducted by 3130 XL Genetic Analyzer according to the manufacturer's instructions (Applied Biosystems, USA). Then, the collected data were analyzed by data collection software version 3.0 and sequencing analysis software version 5.3.1 (Applied Biosystems, USA). The sequences were manually trimmed and analyzed with the Basic Local Alignment Search Tool (BLAST).

Phylogenetic Analysis. The sequences were aligned with ClustalW, the evolutionary history was inferred using the neighbor-joining method, and the evolutionary distances

Table 4. Virulence genes and antimicrobial resistance profile of *Salmonella* serovars isolated from sausages

Code	Serotypes	Accession Number	Resistant profiles	Virulence genes					
				<i>org</i>	<i>Asip</i>	<i>Bsit</i>	<i>Cspi</i>	<i>Airo</i>	<i>NsifA</i>
8D	Agona	KX355299	AMP	+	+	+	+	+	+
63 D	Muenster	KX355305	AMP	+	+	+	+	+	+
55 MA	Livingstone	KX355303	AMP	+	+	+	+	+	+
57 B	Anatum	KX355304	AMP, S, CT	+	+	+	+	+	+
3MA	Give	KX355298	AMP, S	+	+	+	+	+	+
42MA	Give	MG869141	AMP, S	+	+	+	+	+	+
58MA	Give	MG869142	AMP, S	+	+	+	+	+	+
29MA	Give	MG869140	AMP, S	+	+	+	+	+	+
2B	Bovismorbificans	KX355297	AMP, S	+	+	+	+	+	+
12B	Bovismorbificans	MG869128	AMP, S	+	+	+	+	+	+
51B	Mbandaka	MG869131	AMP	+	+	+	+	+	+
31B	Mbandaka	MG869129	AMP	+	+	+	+	+	+
80B	Mbandaka	KX355306	AMP, S, CT	+	+	+	+	+	+
9MA	Mbandaka	MG869136	AMP, S, CT	+	+	+	+	+	+
17D	Montevideo	KX355301	AMP, S, CT	+	+	+	+	+	+
108D	Montevideo	MG869146	AMP, S, CT	+	+	+	+	+	+
72D	Montevideo	MG869143	AMP, S, CT	+	+	+	+	+	+
100MA	Corvallis	MG869133	AMP, S	+	+	+	+	+	+
97MA	Corvallis	KX355307	AMP, S	+	+	+	+	+	+
25B	Corvallis	MG869139	AMP, S	+	+	+	+	+	+
95D	Corvallis	MG869134	AMP, S	+	+	+	+	+	+
94MA	Corvallis	MG869144	AMP, CT	+	+	+	+	+	+
18B	Corvallis	MG869137	AMP, CT	+	+	+	+	+	+
19MA	Corvallis	MG869138	AMP, AML, SMX, SSS	+	+	+	+	+	+
113MA	Corvallis	KX355309	AMP, S, AML, CXM,	+	+	+	+	+	+
130 D	Saintpaul	KX355311	AMP, S, CT, SMX, SSS, SXT	+	+	+	+	+	+
104D	Kentucky	MG869145	AMP, S	+	+	+	+	+	+
143D	Kentucky	MG869135	AMP, S	+	+	+	+	+	+
30D	Kentucky	KX355302	AMP, S, TE, ENR, OFX, CIP, NA, UB	+	+	+	+	+	+
116B	Kentucky	KX355310	AMP, AML, MA, SMX, NA, ENR, UB, OFX, CIP, TE, S, SSS	+	+	+	+	+	+
1D	Kentucky	MG869130	AMP, AML, AMC, SMX, NA, ENR, UB, OFX, CIP, TE, S, SSS	+	+	+	+	+	+
14D	Kentucky	KX355300	AMP, AML, AMC, MA, SMX, NA, ENR, UB, OFX, CIP, TE, S, SSS	+	+	+	+	+	+
102D	Typhimurium	MG869132	AMP, AML, AMC, CRO, MA, CXM, CTX, SXT, SMX, K, AK, CT, TE, S, C, SSS	+	+	+	+	+	+
105D	Typhimurium	KX355308	AMP, AML, AMC, CRO, MA, CXM, CTX, SXT, SMX, NA, UB, K, AK, CT, TE, S, C, SSS	+	+	+	+	+	+

were computed using the maximum composite likelihood method (Mega7 software) with 1000 bootstrap replications. *Salmonella enterica* str. 08-00436, *Salmonella* Mbandaka str. SA20026234, *Salmonella* Agona str. 460004 2-1, and *Salmonella* Typhi str. CT18 were used as in-group strains, and *Escherichia coli* ATCC 8739 was used as an out-group strain to root the phylogenetic tree.

Ethics. Ethical approval was not required in this study since no live animals or humans samples were used in the experiments.

Results

Isolation, Identification and Antimicrobial Susceptibility Testing. Among the 34 isolated *Salmonella*, 12 serotypes were

identified (Table 4). In addition, the antimicrobial resistance analysis has shown a high rate of resistance to several antibiotics, with presence of 13 different phenotypic profiles (Table 4). Moreover, multidrug resistance (more than two antibiotics) was detected in 15 strains (44%). From them, one *Salmonella* typhimurium strain was considered as the highest by exerting resistance against 18 different antimicrobial compounds (Table 4).

Amplification of Virulence Genes Using Multiplex PCR.

In order to evaluate the pathogenicity of *Salmonella* strains and to have an idea about its capacity to survive in host environments, simplex and multiplex PCR methods were used to detect 6 virulence genes, namely, *orgA*, *sipB*, *sitC*, *spiA*, *iroN*, and *sifA* (Figures 1 and 2), involved in its virulence system. The results showed that all isolated strains contain the 6 virulence genes (Table 4).

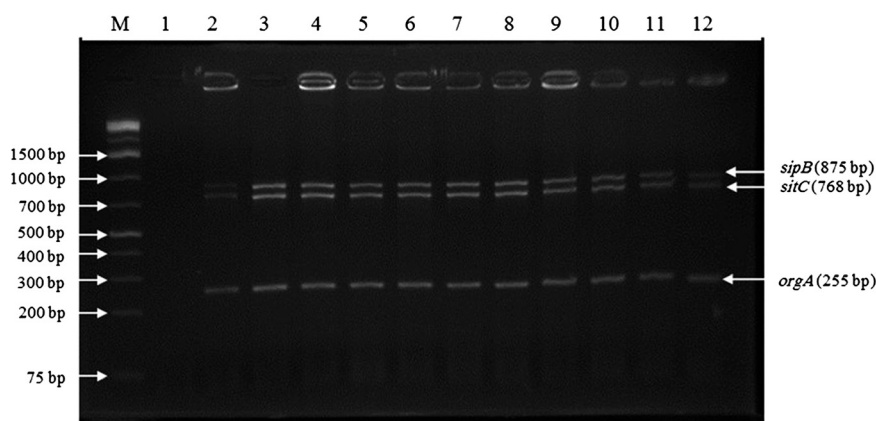


Figure 1. PCR products amplified with the universal virulence gene primers (*orgA*, *sipB*, and *sitC*). Lanes: (M) DNA ladder (GeneRuler 1Kb Plus), (1) negative control, (2) positive control, and (3–12) *Salmonella* tested.

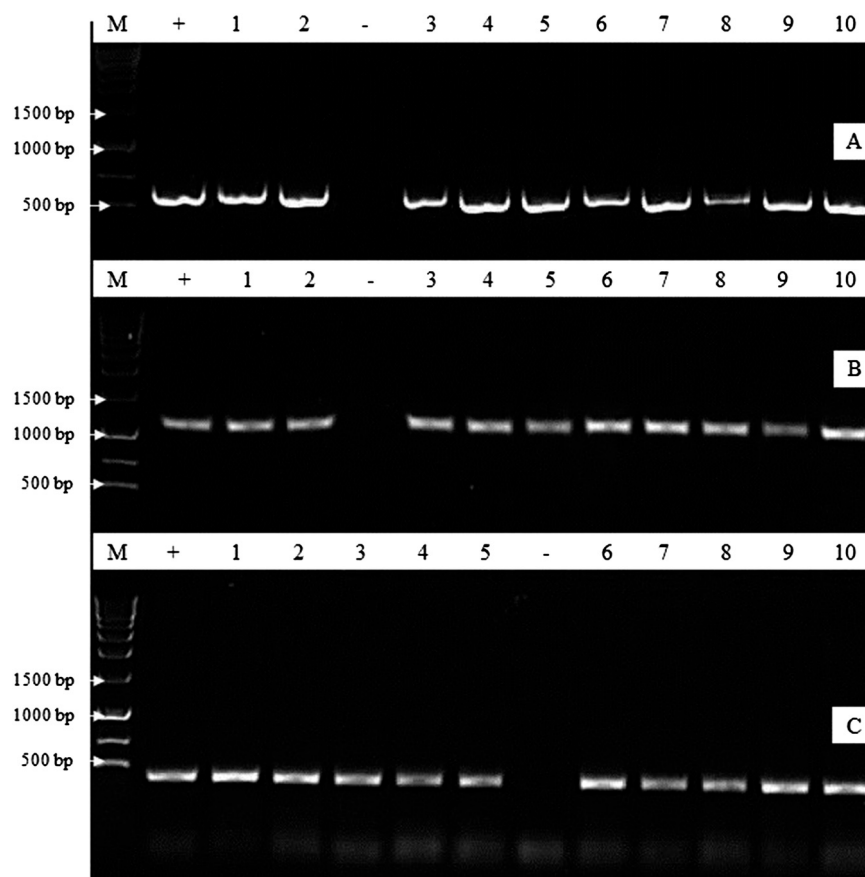


Figure 2. PCR products in agarose gel electrophoresis 1% with the expected molecular size of 550 bp for *SpiA* gene (A), 1205 bp for *IroN* gene (B), and 449 bp for *SifA* gene (C). Lanes: (1–10) *Salmonella* tested, (M) DNA ladder (Hyper Ladder 500 bp), (–) negative control, and (+) positive control

Amplification and Sequencing of the 16S rRNA Genes.

Amplification of 16S rRNA genes was performed on extracted genomic DNA of isolated *Salmonella* strains. The results showed that all examined strains generate an amplicon of 1500 bp (Figure 3). Then, PCR products were sequenced and analyzed by the online software “BLAST” (https://blast.ncbi.nlm.nih.gov/Blast.cgi?PAGE_TYPE=BlastSearch), and the obtained sequences were deposited in GenBank under the corresponding accession numbers (Table 4).

Phylogenetic Analysis and Identification Criteria. The phylogenetic analysis of 16S rRNA genes organized all the strains into 3 clusters (I, II, and III), and cluster I is divided into 3 sub-clusters (Ia, Ib, and Ic) (Figure 4). The analysis of 16S rRNA genes groups the serotypes Corvallis, Kentucky, Typhimurium, Anatum, Mbandaka, Livingstone, and Saintpau in cluster I, and cluster II is constituted by *S. Montevideo*, *S. Bovismorbificans*, *S. Give*, and *S. Agona*. However, cluster III

is constituted by 2 strains, namely, *S. Muenster* and *S. Kentucky*, which are placed separately on side branches from the strains. Moreover, 16S rRNA based analysis showed that all 16S rRNA sequences possessed a $\geq 98\%$ similarity to those of *Salmonella enterica* species.

Discussion

Worldwide, *Salmonella* are recognized as a major gastrointestinal pathogen for humans and animals, whereas, *Salmonella* typhimurium and *Salmonella enteritidis* were considered as the major serovars that can be infecting human after eating food of animal origin, but this data may be different over the years and countries.

In this study, the antimicrobial resistance analysis revealed the presence of *Salmonella* Kentucky resistant to quinolones and *Salmonella* Typhimurium resistant to multiple antibiotics including 3rd generation cephalosporins. Other studies showed that the resistance to quinolones, fluoroquinolones, and 3rd generation cephalosporins in *Salmonella* has recently increased [17–20]. This resistance may be due to the intensive use of antibiotics in the veterinary and human fields by contributing to the acquisition of resistance genes and exerting a selective pressure for the development of resistant bacteria [21] and may change depending on serotype, time, source of microorganism, and geographic region of isolate [22].

The pathogenicity of *Salmonella* is influenced by various factors encoded by different virulence genes that play an important role in different steps of pathogenicity, such as adhesion, invasion, intracellular survival, systemic infection, toxin production, and iron acquisition [7]. In this study, the amplification of virulence genes by PCR showed that all isolated strains contain the 6 tested virulence genes (*orgA*, *sitC*, *sipB*, *spiA*, *iroN*, and *sifA*).

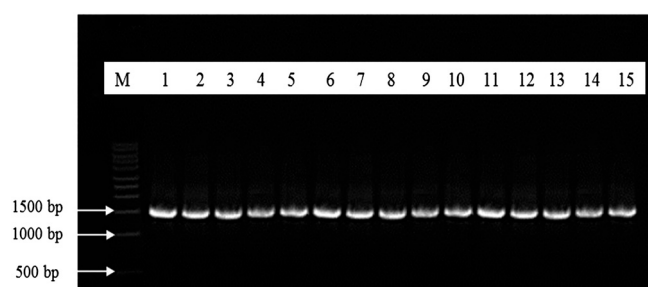


Figure 3. The amplification results of 16S rRNA genes using universal primers. Lanes: (1) *S. Typhimurium*, (2) *S. Mbandaka*, (3) *S. Livingstone*, (4), *S. Muenster*, (5) *S. Give*, (6) *S. Bovismorbificans*, (7–9) *S. Kentucky*, (10–11) *S. Corvallis*, (12) *S. Montevideo*, (13) *S. Agona*, (14) *S. Anatum*, (15) *S. Saintpaul*, and (M) 1Kb DNA ladder

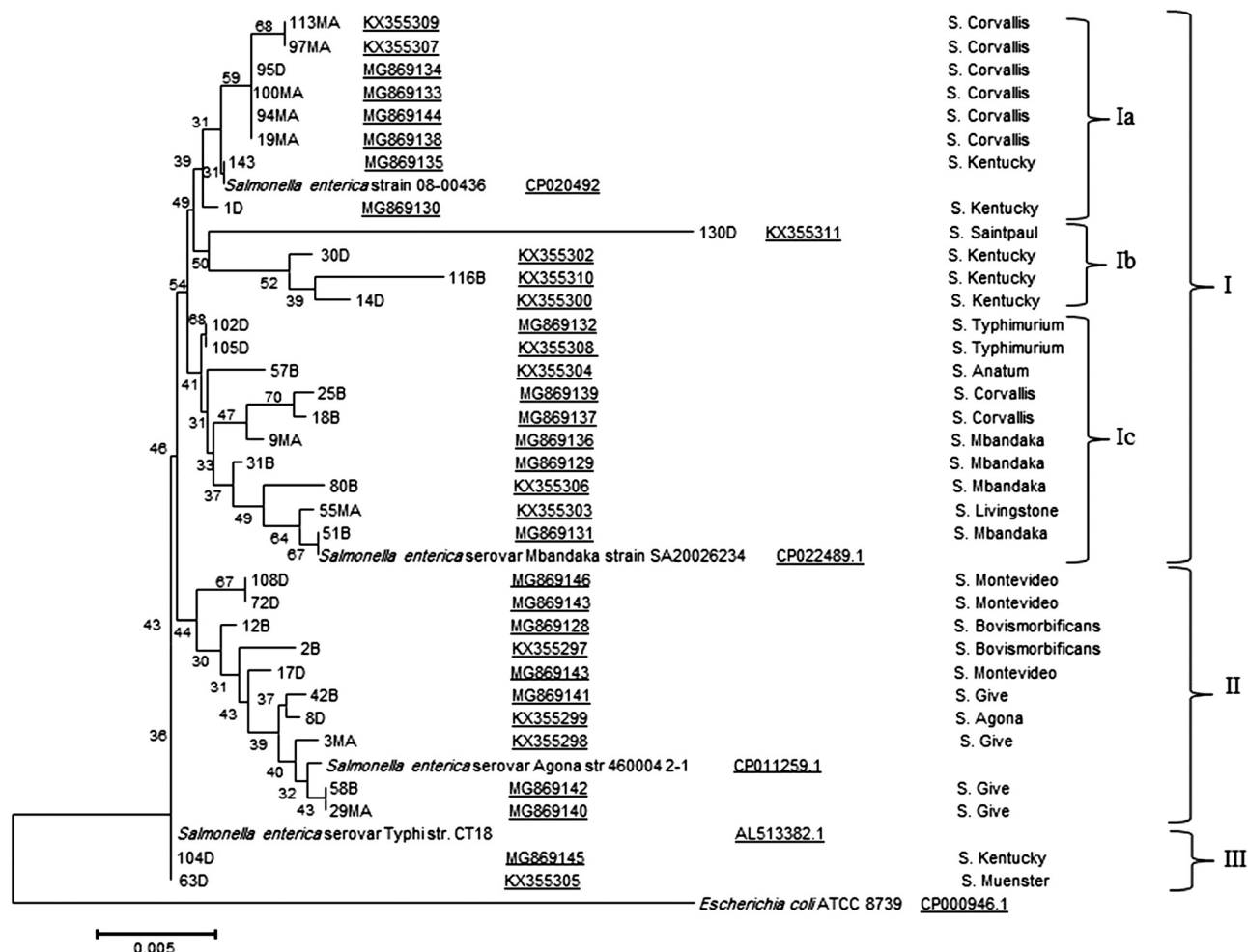


Figure 4. Phylogenetic tree of isolated *Salmonella enterica* strains based on 16S rRNA sequences analysis using MEGA7

The host cell invasion and intracellular survival of *Salmonella* depend on several genes that are clustered on pathogenicity islands (PIs), and these effector proteins are transferred by 2 type III secretion systems, namely, T3SS1 and T3SS2 [23]. Moreover, *Salmonella* strains express several invasion genes located on the *Salmonella* pathogenicity islands 1 and 2 (SPI-1 and SPI-2), which promote bacterial uptake and invasion of non-phagocytic cells to cross the epithelial barrier [24]. Among these genes, *orgA* is required for invasion and secretion system [25]. Thus, the *sipB* gene is responsible for the entry into non-phagocytic cells and the killing of macrophages. It has been shown that the targeting of *sipB* by the inv-Spa type III secretion apparatus is necessary and sufficient for the induction of macrophage apoptosis [26].

The *iroN* gene is implicated in iron acquisition [27]. However, the *sitC* gene encodes an important transporter of iron. Also, a study carried out by Boyer et al. on *Salmonella* Typhimurium showed that *sitABCD* is required for replication of *Salmonella* inside macrophages and for the creation of virulence in susceptible animals [28]. On the other hand, the *sifA* gene is required for the formation of filamentous structures in the lysosome vacuoles of infected epithelial cells [29].

A previous study conducted on *Salmonella* typhimurium showed that *spiA* gene codes for an outer membrane component that is essential for virulence in host cells [30]. Another study carried out by Dong et al. revealed that *spiA* gene is associated with biofilm formation mechanism [31]. It has been demonstrated that biofilm formation improves the ability of microorganisms to withstand stresses, such as desiccation, temperature extremes, antibiotics, and antiseptics [32], which

allowed these bacteria to survive longer in animal farms and to contaminate meats and eggs, which remain the main vehicles of *Salmonella* transmission to humans.

In Morocco, it is a challenge for laboratories to systematically identify *Salmonella* isolates on the basis of biochemical and serological identification using Kaufmann White scheme because of the cost of reagents and the time needed to get the results. In this study, we conducted a rapid and cost-effective method to identify the isolated *Salmonella* strains using DNA sequencing tools. Furthermore, the sequence analysis of the 16S rRNA genes is being regularly used to identify bacterial species and to perform the taxonomic studies in clinical and scientific investigations [33]. However, the phylogenetic analyses can be used to understand the emergence of pathogenic bacteria and to study the relationship between isolated strains and other reference strains, implicated in animal or human diseases [12, 19, 34].

In this study, the analysis of phylogenetic tree showed the presence of different 16S rRNA profiles among the isolated *Salmonella* serovars, which are grouped into 3 clusters and 3 sub-clusters, suggesting the presence of different contamination sources due to the diversity of raw materials and manufacturing processes used for each type of sausages.

Conclusion

The results obtained in this study showed that the sequencing of 16S rRNA genes was a suitable tool for identification of *Salmonella* strains at the genus and species level. In addition, the phylogenetic analysis showed a high diversity in all clusters of this bacterium. Furthermore, the antimicrobial

resistance and the virulence gene analysis suggest that sausages are contaminated with *Salmonella* strains and present a major risk to public health.

Funding Sources

The authors declare that they did not have any funding source or grant to support their research work.

Authors' Contributions

This work was carried out in collaboration between all authors. FRF, BB and MM designed the experimental procedures. AED, BO and AE conducted the experimental analysis. SK and SO conducted the bio-informatics analysis. AED and FRF analyzed the data and wrote the manuscript. All authors read and approved the final manuscript.

Conflict of Interest

The authors declare no conflicts of interest.

Acknowledgement. The authors would like to express their sincere thanks to National Center for Scientific and Technical Research (CNRST) for sequencing the PCR products.

References

1. Bula-Rudas FJ, Rathore MH, Maraqa NF. *Salmonella* Infections in Childhood. *Adv Pediatr*. 2015;62:29–58.
2. Doosti A, Mokhtari-Farsani A, Chehelgerdi M. Molecular Characterization of Gyr-A Gene Polymorphism in *Salmonella Enterica* Serovar Enteritidis Isolated of Egg Shells. *J Food Saf*. 2016;36:557–62.
3. EFSA. Analysis of the baseline survey on the prevalence of *Salmonella* in holdings with breeding pigs in the EU, 2008 1 Part A: *Salmonella* prevalence estimates. *EFSA J*. 2009;7:1–93.
4. Majowicz SE, Musto J, Scallan E, Angulo FJ, Kirk M, O'Brien SJ, Jones TF, Fazil A, Hoekstra RM. The Global Burden of Nontyphoidal *Salmonella* Gastroenteritis. *Clin Infect Dis*. 2010;50:882–9.
5. Scallan E, Hoekstra RM, Angulo FJ, Tauxe RV, Widdowson MA, Roy SL, Jones JL, Griffin PM. Foodborne illness acquired in the United States—Major pathogens. *Emerg Infect Dis*. 2011;17:7–15.
6. Cohen N, Ennaji H, Bouchrif B, Hassar M, Karib H. Comparative Study of Microbiological Quality of Raw Poultry Meat at Various Seasons and for Different Slaughtering Processes in Casablanca (Morocco). *J Appl Poult Res*. 2007;16:502–8.
7. Skyberg JA, Logue CM, Nolan LK. Virulence genotyping of *Salmonella* spp. with multiplex PCR. *Avian Dis*. 2006;50:77–81.
8. Tamang MD, Gurung M, Nam H-M, Moon DC, Jang G-C, Jung S-C, Lim S-K. Antimicrobial susceptibility and virulence characteristics of *Salmonella enterica* Typhimurium isolates from healthy and diseased pigs in Korea. *J Food Prot*. 2014;77:1481–6.
9. Grimont P, Weill F-X. Antigenic formulae of the *Salmonella* servovars. Institut Pasteur, Paris; 2007.
10. Ed-Dra A, Filali FR, Karraouan B, El Allaoui A, Aboukacem A, Bouchrif B. Prevalence, molecular and antimicrobial resistance of *Salmonella* isolated from sausages in Meknes Morocco *Microb Pathog*. 2017;105:340–345.
11. Bouymajane A, Filali FR, Oulghazi S, Ed-Dra A, Benhallam F, El Allaoui A, Anissi J, Sendide K, Ouahmidou B, Moumni M. Occurrence, molecular and antimicrobial resistance of *Enterococcus* spp. Isolated from raw cow's milk trade by street trading in Meknes city, Morocco *GERMS*. 2018;8:77–84.
12. Tajbakhsh M, Nayer BN, Motavaze K, Kharaziha P, Chiani M, Zali MR, Klena JD. Phylogenetic relationship of *Salmonella enterica* strains in Tehran, Iran, using 16S rRNA and gyrB gene sequences. *J Infect Dev Ctries*. 2011;5:465–72.
13. Janda JM, Abbott SL. 16S rRNA gene sequencing for bacterial identification in the diagnostic laboratory: Pluses, perils, and pitfalls. *J Clin Microbiol*. 2007;45:2761–4.
14. CLSI. Performance Standards for Antimicrobial Susceptibility Testing; Twenty-Fourth Informational Supplement; 2014.
15. Mezal EH, Sabol A, Khan MA, Ali N, Stefanova R, Khan AA. Isolation and molecular characterization of *Salmonella enterica* serovar Enteritidis from poultry house and clinical samples during 2010. *Food Microbiol*. 2014;38:67–74.
16. Weisburg WG, Barns SM, Pelletier DA, Lane DJ. 16S ribosomal DNA amplification for phylogenetic study. *J Bacteriol*. 1991;173:697–703.
17. Bouchrif B, Karraouan B, Ennaji MM, Timinouni M. Quinolones-resistant *Salmonella* spp. in Casablanca–Morocco. *Médecine Mal Infect*. 2008;38:615–6.
18. Bouchrif B, Le Hello S, Pardos M, Karraouan B, Perrier-Gros-Claude JD, Ennaji MM, Timinouni M, Weill FX. Cefazidime-resistant *Salmonella enterica*, Morocco. *Emerg Infect Dis*. 2009;15:1693–5.
19. Murgia M, Bouchrif B, Timinouni M, Al-Qahtani A, Al-Ahdal MN, Cappuccinelli P, Rubino S, Paglietti B. Antibiotic resistance determinants and genetic analysis of *Salmonella enterica* isolated from food in Morocco. *Int J Food Microbiol*. 2015;215:31–9.
20. Karraouan B, Ziyate N, Ed-Dra A, Amajoud N, Boutaib R, Akil A, El Allaoui A, El Ossmani H, Zerouali K, Elmdaghri N, Bouchrif B. *Salmonella* Kentucky: Antimicrobial resistance and molecular analysis of clinical, animal and environment isolates, Morocco. *J Infect Dev Ctries*. 2017;11:368–70.
21. Foley SL, Lynne AM. Food animal-associated *Salmonella* challenges: pathogenicity and antimicrobial resistance. *J Anim Sci*. 2008;86:E173–87.
22. Acar S, Bulut E, Durul B, Uner I, Kur M, Aysaroglu MD, Kirmaci HA, Tel YO, Zeyrek FY, Soyer Y. Phenotyping and genetic characterization of *Salmonella enterica* isolates from Turkey revealing arise of different features specific to geography. *Int J Food Microbiol*. 2017;241:98–107.
23. Ibarra JA, Steele-Mortimer O. *Salmonella* - the ultimate insider. *Salmonella* virulence factors that modulate intracellular survival. *Cell Microbiol*. 2009;11:1579–86.
24. Bhunia A. *Salmonella enterica*. In: Foodborne Microbial Pathogens, New York: Springer; 2018. p. 271–287.
25. Klein JR, Fahlen TF, Jones BD. Transcriptional organization and function of invasion genes within *Salmonella enterica* serovar Typhimurium pathogenicity island 1, including the prgH, prgI, prgJ, prgK, orgA, orgB, and orgC genes. *Infect Immun*. 2000;68:3368–76.
26. Hersh D, Monack DM, Smith MR, Ghori N, Falkow S, Zychlinsky A. The *Salmonella* invasin SipB induces macrophage apoptosis by binding to caspase-1. *Proc Natl Acad Sci USA*. 1999;96:2396–401.
27. Bäumlér AJ, Norris TL, Lasco T, Voigt W, Reissbrodt R, Rabsch W, Heffron F. IroN, a novel outer membrane siderophore receptor characteristic of *Salmonella enterica*. *J Bacteriol*. 1998;180:1446–53.
28. Boyer E, Bergevin I, Malo D, Gros P, Cellier MFM. Acquisition of Mn(II) in addition to Fe(II) is required for full virulence of *Salmonella enterica* serovar Typhimurium. *Infect Immun*. 2002;70:6032–42.
29. Stein MA, Leung KY, Zwick M, Garcia-del Portillo F, Finlay BB. Identification of a *Salmonella* virulence gene required for formation of filamentous structures containing lysosomal membrane glycoproteins within epithelial cells. *Mol Microbiol*. 1996; 20: 151–64.
30. Ochman H, Soncini FC, Solomon F, Groisman EA. Identification of a pathogenicity island required for *Salmonella* survival in host cells. *Proc Natl Acad Sci USA*. 1996;93:7800–4.
31. Dong Y, Glasner JD, Blattner FR, Triplett EW. Genomic Interspecies Microarray Hybridization: Rapid Discovery of Three Thousand Genes in the Maize Endophyte, *Klebsiella pneumoniae* 342, by Microarray Hybridization with *Escherichia coli* K-12 Open Reading Frames. *Appl Environ Microbiol*. 2001;67:1911–21.
32. Marin C, Hernandez A, Lainez M. Biofilm development capacity of *Salmonella* strains isolated in poultry risk factors and their resistance against disinfectants. *Poult Sci*. 2009;88:424–31.
33. Petti CA, Polage CR, Schreckenberger P. The role of 16S rRNA gene sequencing in identification of microorganisms misidentified by conventional methods. *J Clin Microbiol*. 2005;43:6123–5.
34. Ed-Dra A, Karraouan B, El Allaoui A, Khayatti M, El Ossmani H, Rhazi Filali F, Elmdaghri N, Bouchrif B. Antimicrobial resistance and genetic diversity of *Salmonella* Infantis isolated from foods and human samples in Morocco. *J Glob Antimicrob Resist*. 2018;14:297–301.
35. Jones BD, Falkow S. Identification and characterization of a *Salmonella* typhimurium oxygen-regulated gene required for bacterial internalization. *Infect Immun*. 1994;62:3745–52.
36. Chen LM, Kaniga K, Galan JE. *Salmonella* spp. are cytotoxic for cultured macrophages. *Mol Microbiol*. 1996;21:1101–15.
37. Janakiraman A, Schlauch JM. The putative iron transport system SitABCD encoded on SPI1 is required for full virulence of *Salmonella* typhimurium. *Mol Microbiol*. 2000;35:1146–55.